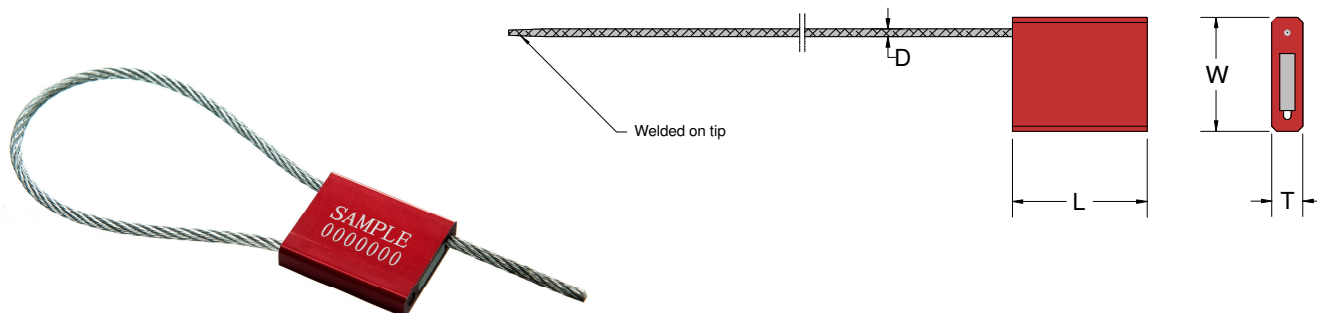




CS1 SEAL Data Sheet



The Acme **CS1 Cable Seal** is available in various cable lengths and diameters to suit all requirements. The lock body is manufactured from die-cast aluminum and the cable from non-preformed galvanized steel. The cable has a welded tip for ease of locking and should the cable be cut it unravels making it impossible to re-lock the seal again without showing obvious signs of tampering. The cable seal require cutters for removal.

Technical Data

Recommended Applications

Tailers, Tankers, Rail Freight, Containers, Refineries,
Warehouses

Material

Lock Body : Die-Cast Aluminium
Cable : Non- Preformed Galvanised Steel

Available Cable Lengths

20cm – 400cm

Marking

Laser marking
Consecutively numbered as standard
Optional customer name/logo

Colours

Red, Orange, Blue, Green, Gold, Black, White

Packaging

Quoted at time of enquiry

| CS1 MODEL NUMBER | | | | |
|------------------|----------------------------|--|--------------------------|---------------|
| MODEL | CABLE DIAMETER (mm) (D) | LOCK BODY DIMENSIONS (mm) (L x W X T) | TENSILE STRENGTH (KG) | PROFILE SHAPE |
| A | 1.5 | 26 x 22 x 6 | 150 | |
| B | 2.0 | 26 x 22 x 6 | 200 | |
| C | 2.5 | 26 x 22 x 6 | 250 | |
| D | 3.5 | 26 x 26 x 7.5 | 900 | |
| E | 5.0 | 30 x 38 x 10 | 1500 | |