



## BARCODED SEALS Data Sheet

Barcoding is available on all Acme plastic security seals, including the Encapsulated T Seal and the Bolt Seal, using either Laser or Thermo Transfer technology to produce high quality and consistent barcodes.

### Technical Data

---

The most requested barcode is either the numeric only Interleaved 2 of 5 or the alpha numeric Code 128; Code 39 barcode is a further option. 2d and QR barcodes may also be available and are marked using thermo transfer technology. Barcodes are usually marked onto the pastel colours shown below, plus black and white. Other pastel colours may be available on request for quantities in excess of 100,000 seals.

#### Pastel Colours



Pink



Green



Peach

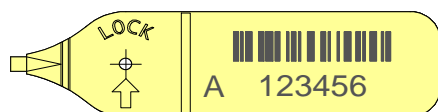


Yellow



Blue

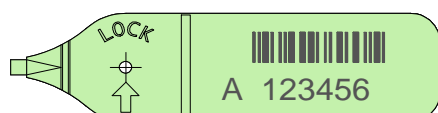
#### **Yellow X Seal - Long Tag**



#### **Code 128**

The alpha-numeric barcode.  
Bar-code size 25mm x 5mm

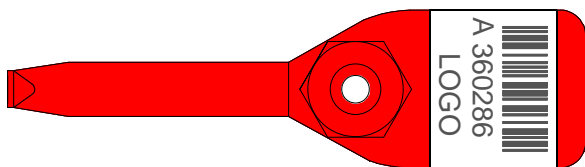
#### **Green X Seal - Long Tag**



#### **Interleaved 2 of 5**

The numeric only barcode.  
Bar-code size 21mm x 5mm

#### **Red Griptight Seal**



#### **Interleaved 2 of 5**

The numeric only barcode shown here laser marked onto a white foil patch for greater definition.  
Patch size 25mm x 20mm

**Barcoding is available as an option on most seals within the Acme product portfolio.**

**To ensure that you achieve the best combination of Security Seal/Barcode for any specific application please contact us to discuss your requirement in full detail.**