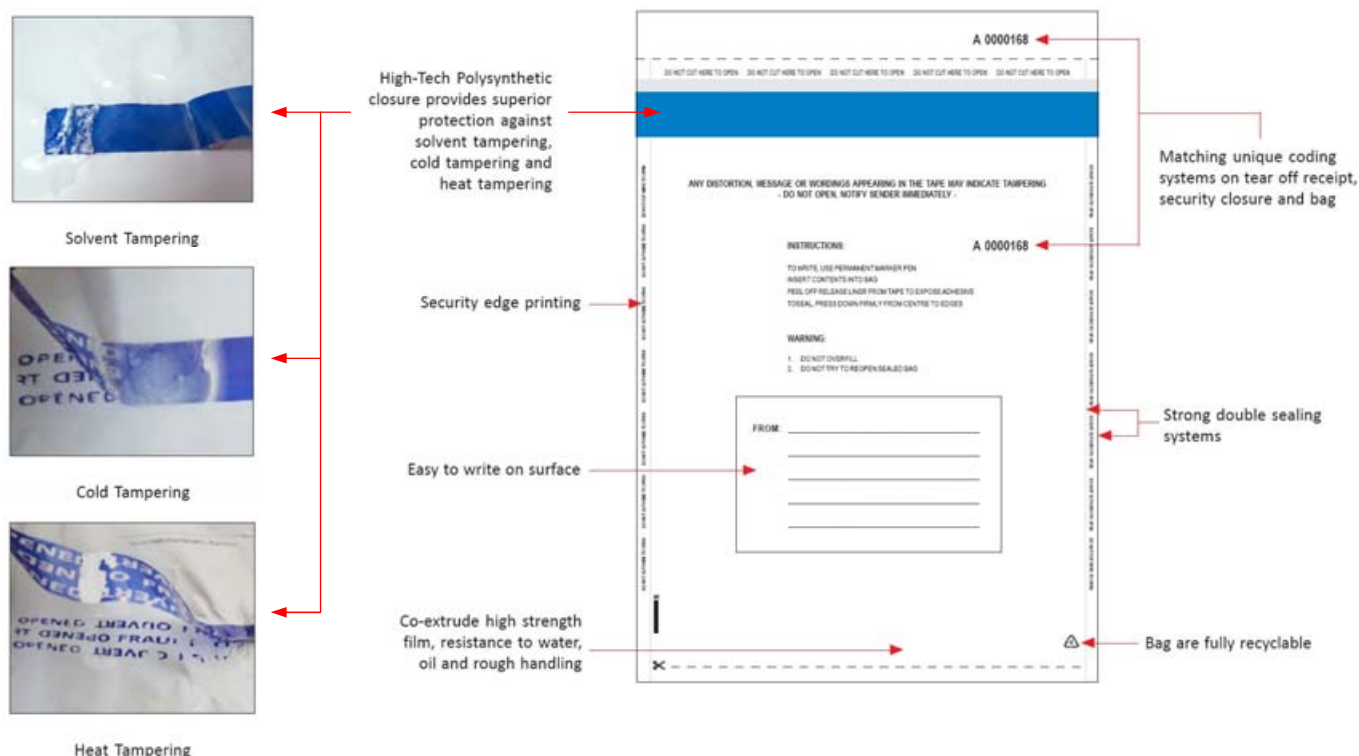




TE DOCUMENT BAG Data Sheet



Our Acme **TE** security bags are made from co-extruded polythene with an easy to use closure seal that offers tamper evident security against ALL known methods of attack. The bag can be either transparent or opaque and once it is sealed, any unauthorized attempts to break the seal will cause the "OPEN / VOID" hidden message to appear. The tape provides **clear permanent evidence of tampering** from attempts to open the seal with solvent, extremes of heat and cold, mechanical peeling or cutting and resealing.

Technical Data

Recommended Applications

Cash in transit, cheques, share certificates, forensic evidence, confidential & legal documents, wills, deeds and contracts.

Material

Super strength opaque co-extruded HDPE or clear LDPE material which are high impact and tear resistant.

Security Level Specifications (1 = low / 3 = High)

- 1 - Low security features permanent closure
- 2 - Medium security features Tamper Evident, Cold resistant
- 3 - High security features Tamper Evident, Cold, Heat, Solvent, Water resistant

Marking

Sequential numbering and high resolution bar code for use in track and trace systems with a receipt and multi-lingual instructions.

Size

- A3 - 340mm x 520mm x 45mm receipt
- A4 - 260mm x 340mm x 45mm receipt

Colours

Each bag can be printed in up to 3 colours. Available colours on request.

Packaging

On request