

DESCRIPTION:

° Tinplate seal
Suitable for textiles.

HOW TO USE:

° Lift an area of the textile and insert the point of the seal into it. Pinch it closed from the other side.

SIZES:

° Label : 17x21 mm

SEQUENTIAL NUMBERING AND CUSTOMISATION:

° METALLIC ENGRAVED
° Sequenced numbering up to 6 digits.
° Customised up to 10 characters on one line
° Logos available upon request




MATERIAL:

° ALUMINIUM
° GALVANIZED IRON

OTHER PRODUCT SIZES WITH THE SAME CHARACTERISTICS

° SNAPSEAL LITHO LHG 1
° SNASEAL STANDARD LHG 2

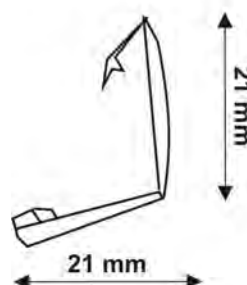


AVAILABLE COLOURS		
		

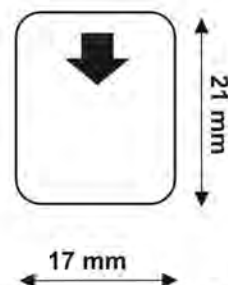
PACKING:

Carton with 10.000 seals
Carton dimensions: 28x43x48 cm
Carton weight: 9,55 kgs
Minimum quantity: 50.000 pieces

LATERAL SIDE



BACK SIDE



FONTAL SIDE

